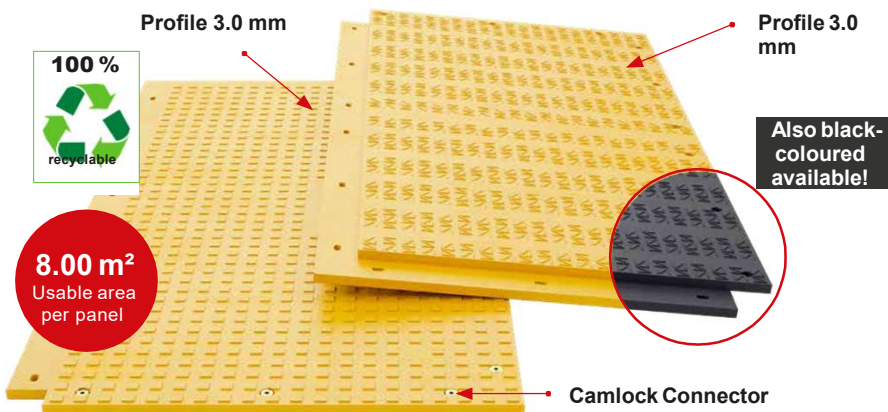


# MRS BAUSTRASSE

Rental|Sales|Service

## ► Mobile Road Systems

### MRS - Super Heavy H



Order No.: 50 700 000

**Material:** polyethylene, high molecular weight

**Dimensions:** 4200 x 2200 x 102 mm (incl. profile) **Overlap Edge:** 200 mm

**Weight per panel:** approx. 409 kg

**Surface / colour:** 3.0 & 3.0 mm profile / black, yellow

**Load capacity:** approx. 415 t (depending on the ground conditions)

**Transport per truck:** 55 units (440 m<sup>2</sup>)

#### ► Properties

- Compression molded high-performance thermoplastic material
- Robust, durable and high-performance products
- Overlap system for interlocking connection, for creating routes and work areas
- Highly efficient weight distribution
- Protection of sensitive ground
- Simple and durable connection system



Gas and oil



Wind power construction



Transmission



Mobile crane working spaces



Heavy load transports

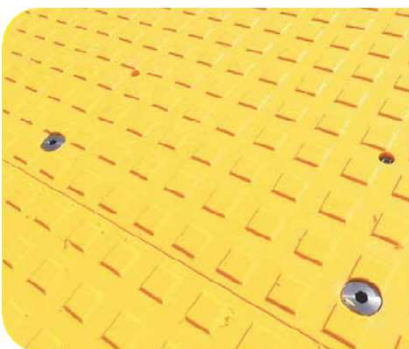


Concerts and events

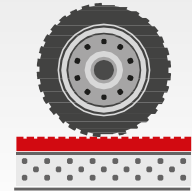


Help pads

■ Developed for **extreme construction projects**. Good performance features and high strength guarantee a **stable** and **even load distribution** - even under the most difficult conditions. The surface design of the products optimizes the **traction** and **safety** of construction vehicles or trucks. The connectors prevent the panels from moving.



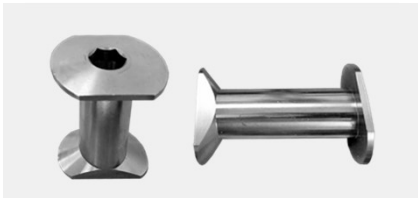
M: +49 176 11007755



## ► Accessories

# MRS - Super Heavy H Accessories

The **MRS - Super Heavy Ground Protection Panels** are laid overlapping. Quick and secure installation with our **Camlock System Connector**.



- **Camlock System Connectors**  
Made of metal,  
for quick and simple connections.  
on request



- **Assembly Tool**  
on request



- **Coupling Piece**  
on request



- **MRS Super Heavy H - Ramp**  
on request



The **hollow chamber system** ensures **high stability** at a relatively **low weight!**

